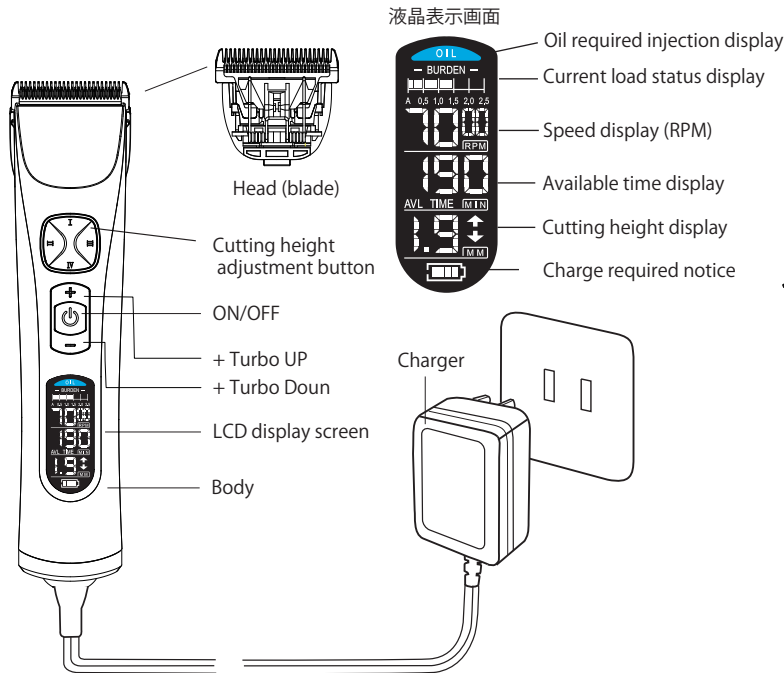
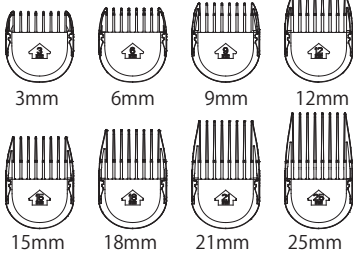


## Name of each part



## accessories

Attachment (8 sizes)



## LED screen function description



**Turbo function (speed display)**

In normal operation, press the + button to change the rotation speed (speed). Up Press the - button to go down  
5000RPM/5500RPM/6000RPM/6500RPM/7000RPM

**Displays the load on the hair clipper**



The above display is normal.



The display above shows a heavy load. This state  
If it continues, clean it and add oil.



The display in the above figure shows a serious load.  
Immediately Remove the head and take care.



**Usable time display function**

The remaining usable time is displayed at a glance.  
The unit is minutes.



**Oil injection notification function required**

When the hair clipper power on time reaches 120 minutes,  
The fill icon flashes and prompts you to fill the oil.



**Charge required notification function**

LCD flashes when the remaining usable time reaches 20 minutes  
To do.

## Product standard

Products name / BTM P28

Body size / 195mm x width 45mm x height 35mm weight 249g

Material / ABS resin, stainless steel

Power supply method / Charging / AC type

Rated voltage / 100V-240V

Rated frequency / 50/60 Hz

Battery / 3.7V/2600mAh

Battery type / lithium ion battery

Charging time / 3 hours to full charge

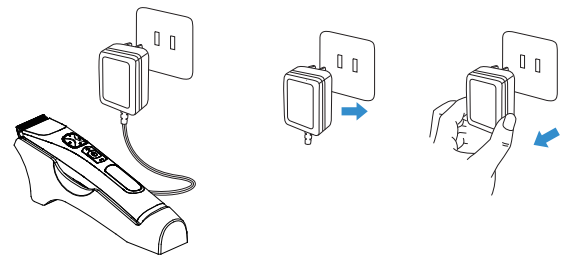
Operating time / 250 minutes

Cutting height adjustment (automatic) / 1mm, 1.3mm, 1.6mm, 1.9mm

Attachment / 3mm, 6mm, 9mm, 12mm, 15mm, 18mm, 21mm, 25mm

Country of manufacture / China (Head office Korea / japan design)

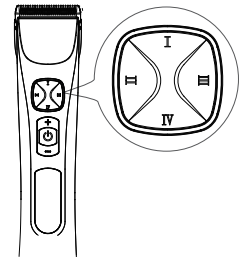
## Charging method



- (1) Insert the connection plug into the bottom of the main unit.
- (2) Insert the AC adapter into an outlet while the power is off.
- (3) When charging is complete, unplug the AC adapter straight as shown above (right) Please pull it out.

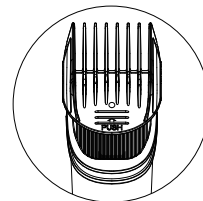
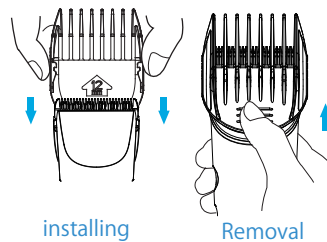
## Cutting height adjustment function

As shown in the figure on the right,  
Press to adjust



Button	I	II	III	IV
Cutting height	1.0mm	1.3mm	1.6mm	1.9mm

## Attachment



BTM - PROFESSIONAL  
**BTM**