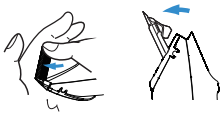
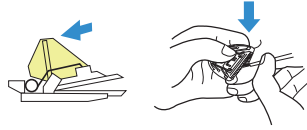


## Cleaning method

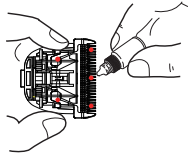


### Blade removal

With your finger from the front as shown Push and remove the blade.

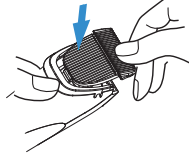


When the holder is pushed in the direction of blue ← in the left figure  
The upper and lower blades are separated.  
Clean in that state Remove the hair with a brush



### Oil injection point

In the red part of the figure  
Insert the oil.



### Attaching the blade

Convex part under the blade  
Hang on the body and push to watch.

## Notes



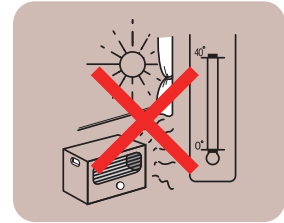
Do not disassemble



Do not wash the product with water



This product is water or neutral detergent  
Wipe with a damp cloth.



This product is exposed to direct sunlight  
Release to a place with high humidity  
Please do not put.

\* The unit may become slightly hot during charging or use.  
This is not a malfunction

## Warranty / free repair provisions BTM P28

If the product fails within the warranty period and you will receive free repairs or replacements, please present this product and this warranty card to the store where you purchased the product. If this product breaks down within the warranty period (one year after purchase) under normal conditions according to the instruction manual and other precautions,

We will replace it for free repair or normal operation

The warranty period for this product is one year from the date of purchase. However, there is a charge for repairs in the following cases even during the warranty period

1. Incorrect usage, failure due to improper repair or modification, and damage.
2. Drop after purchase, transportation failure, or damage.
3. Failure and damage due to force majeure such as natural disasters, fire, abnormal voltage, etc.
4. When no warranty card is presented.
5. The warranty card does not contain the date of purchase, store name or name, and sales store.
6. When lexical text has been rewritten.
7. Replace consumable parts (main body, cord, heater, battery, etc.)

[Battery] Even within the warranty period, battery deterioration due to repeated charging and discharging / shortening of driving time is not covered by the warranty)

D.CORPORATION Maintenance Department

98-5 Doida, Matsuyama, Ehime TEL. 089-915-1820